

# Engine Overview

## A Programmer's Glimpse at UE4

Gerke Max Preussner

[max.preussner@epicgames.com](mailto:max.preussner@epicgames.com)

# The Big Picture

Overview

Directories

Configuration

Modules

Projects

What's Next?

## This Is Not Your Grandma's Engine

- UE4 is pretty hot... but also huge!
- 5000+ directories, 40,000+ files
- Bazillions of lines of code
- Hundreds of modules
- Dozens of tools, thousands of features
- Centuries of man years

## How To Master All This?

- Start with toes, work your way up
- Most code & content you'll never touch
- Nobody knows everything about UE4
- But you'll see, it's really quite easy!



# The Big Picture

Overview

Directories

Configuration

Modules

Projects

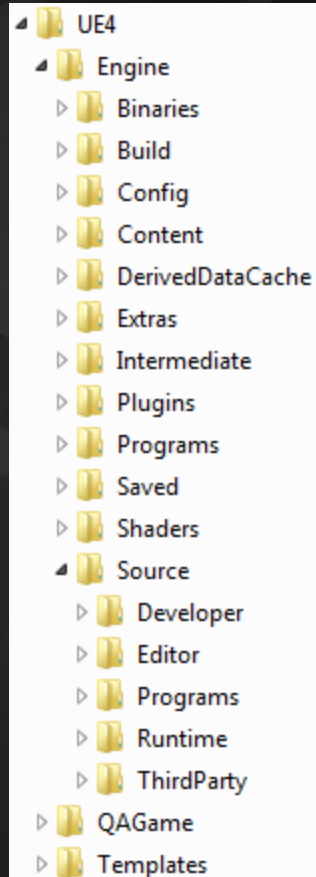
What's Next?

## Root Directory

- `/Engine` – All code, content & configuration for the Engine
- `/MyProject` – All files for the game project 'MyProject'
- `/Templates` – Templates for creating new projects

## Inside the `/Engine` and Project Directories

- `/Binaries` – Executables & DLLs for the Engine
- `/Build` – Files needed for building the Engine
- `/Config` – Configuration files
- `/Content` – Shared Engine content
- `/DerivedDataCache` – Cached content data files (Engine only)
- `/Intermediate` – Temporary build products (Engine only)
- `/Plugins` – Shared and project specific plug-ins
- `/Saved` – Autosaves, local configs, screenshots, etc.
- `/Source` – Source code for all the things!



# The Big Picture

Overview

Directories

Configuration

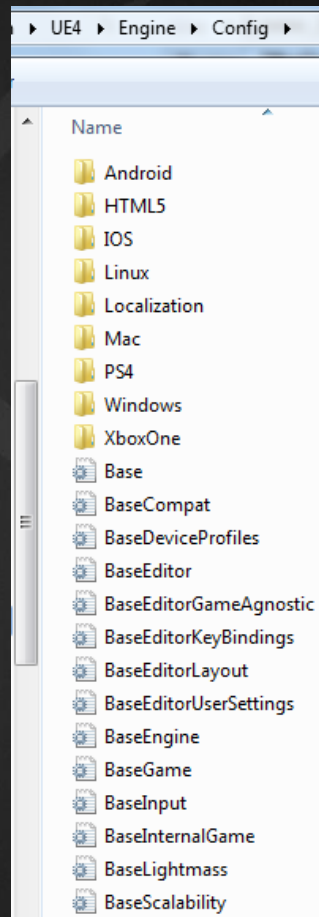
Modules

Projects

What's Next?

## INI Files

- Hold class default properties
- Will be loaded into CDOs on startup
- Organized in a hierarchy
- Higher INIs override lower ones
- Organized in sections
- Key-value pairs within sections
- Important ones exposed in Editor UI
- Low-level access with FConfig



# The Big Picture

Overview

Directories

Configuration

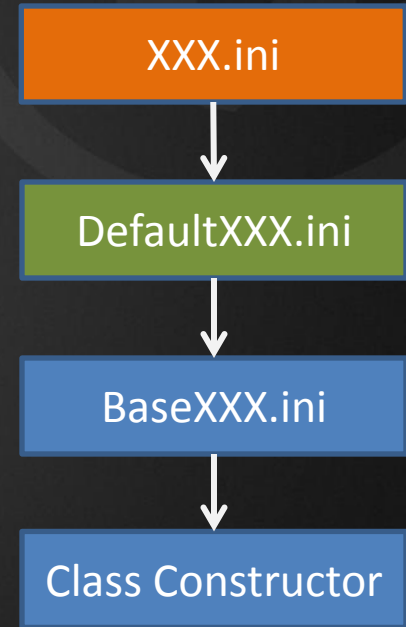
Modules

Projects

What's Next?

## INI Files

- Hold class default properties
- Will be loaded into CDOs on startup
- Organized in a hierarchy
- Higher INIs override lower ones
- Organized in sections
- Key-value pairs within sections
- Important ones exposed in Editor UI
- Low-level access with FConfig





## General

▶ Appearance

[Automation](#)

[Experimental](#)

[Keyboard Shortcuts](#)

[Live Streaming](#)

[Loading & Saving](#)

[Miscellaneous](#)

[Region & Language](#)

[Source Code](#)



## Level Editor

[Miscellaneous](#)

[News Feed](#)

[Play](#)

[Viewports](#)



## Content Editors

[Content Browser](#)

[Graph Editors](#)

## General - Appearance

Customize the look of the editor.

Set as Default

Export...

Import...

Reset to Defaults

Search



### Colors

▶ Selection Color

▶ Pressed Selection Color

▶ Inactive Selection Color

Color Vision Deficiency Preview

### User Interface

Use Small Tool Bar Icons

Enable Window Animations

Show Friendly Variable Names



## Game

▶ Description

[Maps & Modes](#)

[Movies](#)

[Packaging](#)

[Supported Platforms](#)



## Engine

[Audio](#)

[Collision](#)

[Console](#)

[Cooker](#)

[General Settings](#)

[Input](#)

[Navigation Mesh](#)

[Navigation System](#)

[Physics](#)

[Rendering](#)



## Platforms

## Game - Description

Descriptions and other information about your game.

Set as Default

Export...

Import...

Reset to Defaults

These settings are always saved in the default configuration file, which is currently not writable.

Search



Source Path

Homepage

Support Contact

Project Name

www.epicgames.com

### About

Project Thumbnail



Description

Project ID

46CAED3B0-4D67-0B21-67EB-ABA685ED3600

```
[Internationalization]
+LocalizationPaths=%GAMEDIR%Content/Localization/Game
```

```
[/Script/Engine.GameMode]
```

```
[DefaultPlayer]
Name=Player
```

```
[/Script/Engine.GameNetworkManager]
MaxIdleTime=+0.0
DefaultMaxTimeMargin=+0.0
TimeMarginSlack=+1.35
DefaultMinTimeMargin=-1.0
TotalNetBandwidth=32000
MaxDynamicBandwidth=7000
MinDynamicBandwidth=4000
```

```
[/Script/Engine.GameSession]
MaxPlayers=16
MaxSpectators=2
MaxSplitscreensPerConnection=4
bRequiresPushToTalk=true
```

```
[/Script/EngineSettings.GeneralProjectSettings]
CompanyName=
CopyrightNotice=
Description=
LicensingTerms=
PrivacyPolicy=
ProjectVersion=
Homepage=
SupportContact=
```

```
[/Script/Engine.HUD]
ConsoleMessageCount=4
```

## Sections for UObject

- [/*Script/ModuleName.ClassName*]

## Sections for Custom Settings

- [*SectionName*]

## Supported Value Types

- Numeric values, strings, enums
- Structured data
- Static and dynamic arrays

Automatic serialization for UObject properties

# The Big Picture

Overview

Directories

Configuration

Modules

Projects

What's Next?

Modularity Promotes

- Reusability
- Extensibility
- Maintainability
- Decoupling
- Efficiency

Monolithic builds are still possible though!





# The Big Picture

Overview

Directories

Configuration

Modules

Projects

What's Next?

## Module Types

- Developer – Used by Editor & Programs, not Games
- Editor – Used by Unreal Editor only
- Runtime – Used by Editor, Games & Programs
- ThirdParty – External code from other companies
- Plugins – Extensions for Editor, Games, or both
- Programs – Standalone applications & tools

## Module Dependency Rules

- Runtime modules must not have dependencies to Editor or Developer modules
- Plug-in modules must not have dependencies to other plug-ins

# The Big Picture

Overview

Directories

Configuration

Modules

Projects

What's Next?

Module Type	UnrealEd	App	Game
Runtime	✓	✓	✓
ThirdParty	✓	✓	✓
Plugins	✓	✓	✓
Developer	✓	✓	✗
Editor	✓	✗	✗

Module usage across different types of applications

# The Big Picture

Overview

Directories

Configuration

**Modules**

Projects

What's Next?

## Important Modules for Beginners

- Core – Fundamental core types & functions
- CoreUObject – Implements the UObject sub-system
- Engine – Game classes & engine framework
- OnlineSubsystem – Online & social networking features
- Slate – Widget library & high-level UI features



# The Big Picture

Overview

Directories

Configuration

Modules

Projects

What's Next?

## Interesting Modules for Advanced Programmers

- DesktopPlatform – Useful APIs for Windows, Mac & Linux
- DetailCustomizations – Editor's Details panel customizations
- Launch – Main loop classes & functions
- Messaging – Message passing sub-system
- Sockets – Network socket implementations
- Settings – Editor & Project Settings API
- SlateCore – Fundamental UI functionality
- TargetPlatform – Platform abstraction layer
- UMG – Unreal Motion Graphics implementation
- UnrealEd – Unreal Editor main frame & features



# The Big Picture

Overview

Directories

Configuration

Modules

Projects

What's Next?

## Interesting Modules for Cool Features

- Analytics – Collects usage statistics from Editor & games
- AssetRegistry – Database for assets in Unreal Editor
- GameLiveStreaming – Twitch Streaming
- HeadMountedDisplay – HMD Support API (Oculus, etc.)
- JsonUtilities & XmlParser – Handle Json & XML files
- SourceControl – API for custom source control providers

# The Big Picture

Overview

Directories

Configuration

Modules

Projects

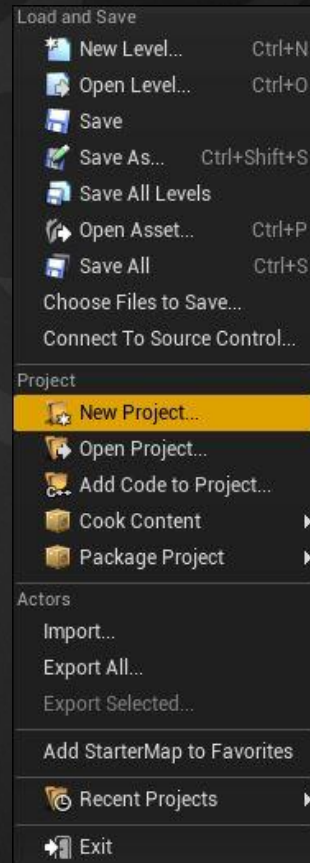
What's Next?

Your Game Projects can...

- Use Blueprints, C++ Code or both
- Contain any number of modules & plug-ins
- Be moved around and shared with others

Project Templates to Get You Started

- Blank (with or without sample content)
- First Person Shooter
- Side scroller, top-down & puzzle games
- Flying & driving games
- They all come in Blueprint and C++ flavors
- More to come, and make your own!



Projects

New Project

Marketplace

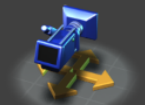
Choose a template for your project. If you choose a C++ template, you must have Visual Studio 2013 installed to compile. Blueprint templates use only visual scripting, and do not require additional software.

**Blank**

A clean empty project with no code.

**Basic Code**

An empty project with some basic game framework code classes created.

**Code First Person**

A project that features a first person perspective camera, with a movable projectile weapon.

Name 

## Project Templates &amp; Samples













Unreal Project Browser

Projects New Project Marketplace

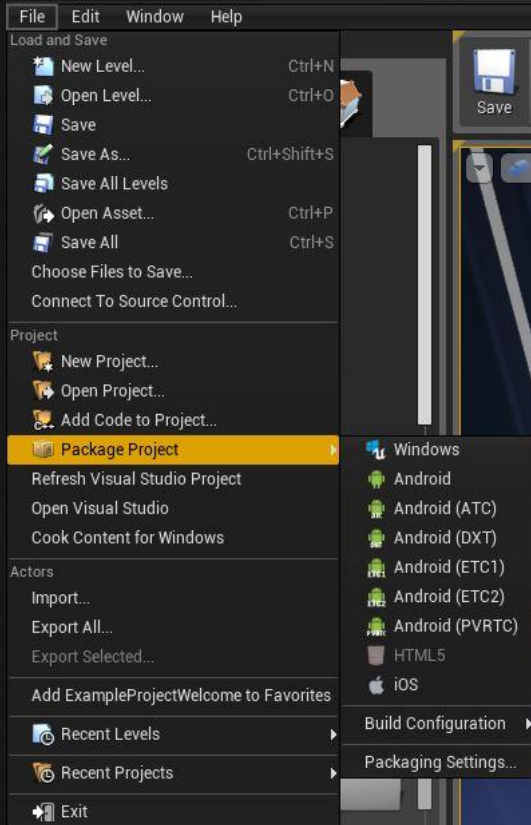
Select an existing project from the list below.

Filter Projects... 🔍 ↻

Samples

 BlackJack	 BlueprintExamples	 Effects 4.1	 Elemental 4.1	 PlatformerGame 4.1	 RealisticRendering
 SciFiHallway 4.1	 StrategyGame	 Stylized	 SwingNinja	 TappyChicken 4.1	 VehicleGame

# Project Packaging & Deployment



## Game - Packaging

Fine tune how your project is packaged for release.

Set as Default Export... Import... Reset to Defaults

Search

### Project

Build Configuration

Staging Directory

Full Rebuild

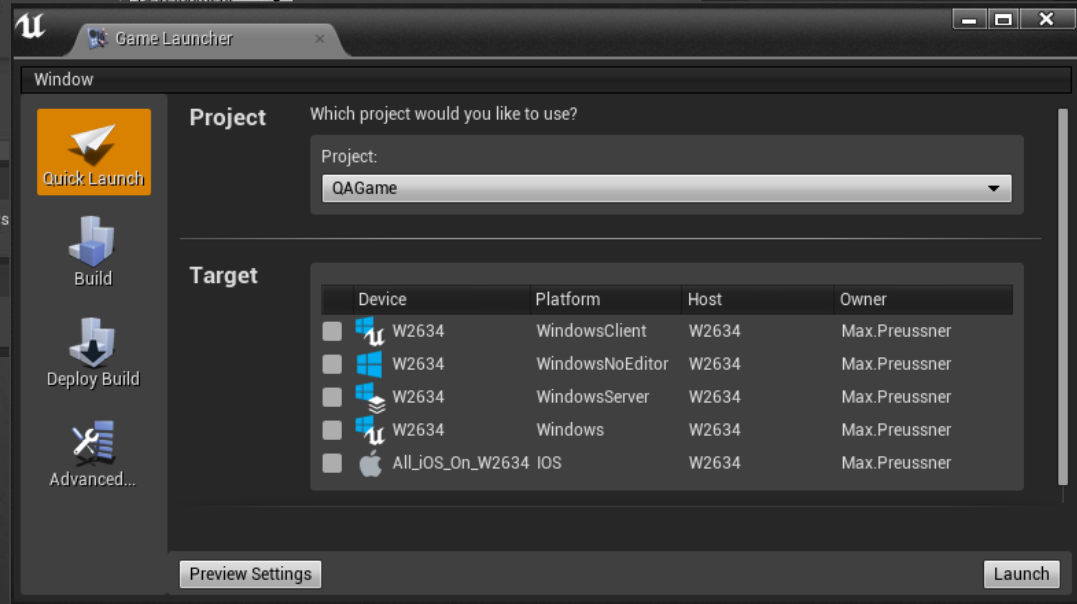
For Distribution

### Cooking

Directories to Always

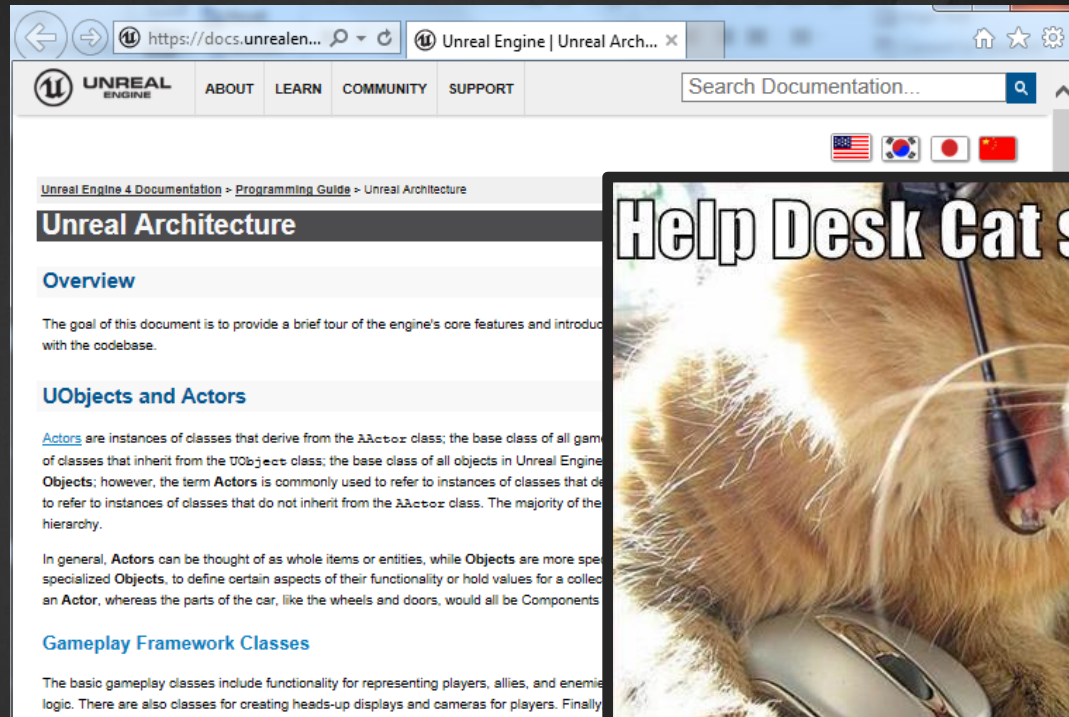
### Packaging

Use Pak File





Overview  
Directories  
Configuration  
Modules  
Projects  
What's Next?



# Questions?

Documentation, Tutorials and Help at:

- AnswerHub: <http://answers.unrealengine.com>
- Engine Documentation: <http://docs.unrealengine.com>
- Official Forums: <http://forums.unrealengine.com>
- Community Wiki: <http://wiki.unrealengine.com>
- YouTube Videos: <http://www.youtube.com/user/UnrealDevelopmentKit>
- Community IRC: #unrealengine on FreeNode

Unreal Engine 4 Roadmap

- [imgtfy.com/?q=Unreal+engine+Trello+](http://imgtfy.com/?q=Unreal+engine+Trello+)

